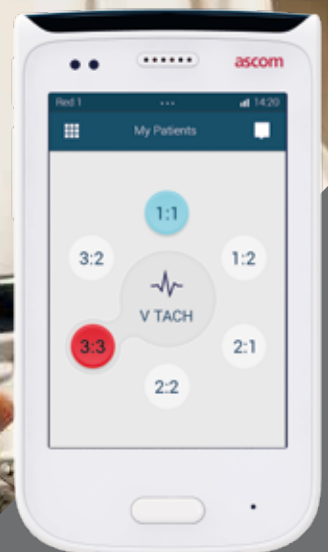


ascom

Inspired by nurses

Developed for increased
patient safety & satisfaction

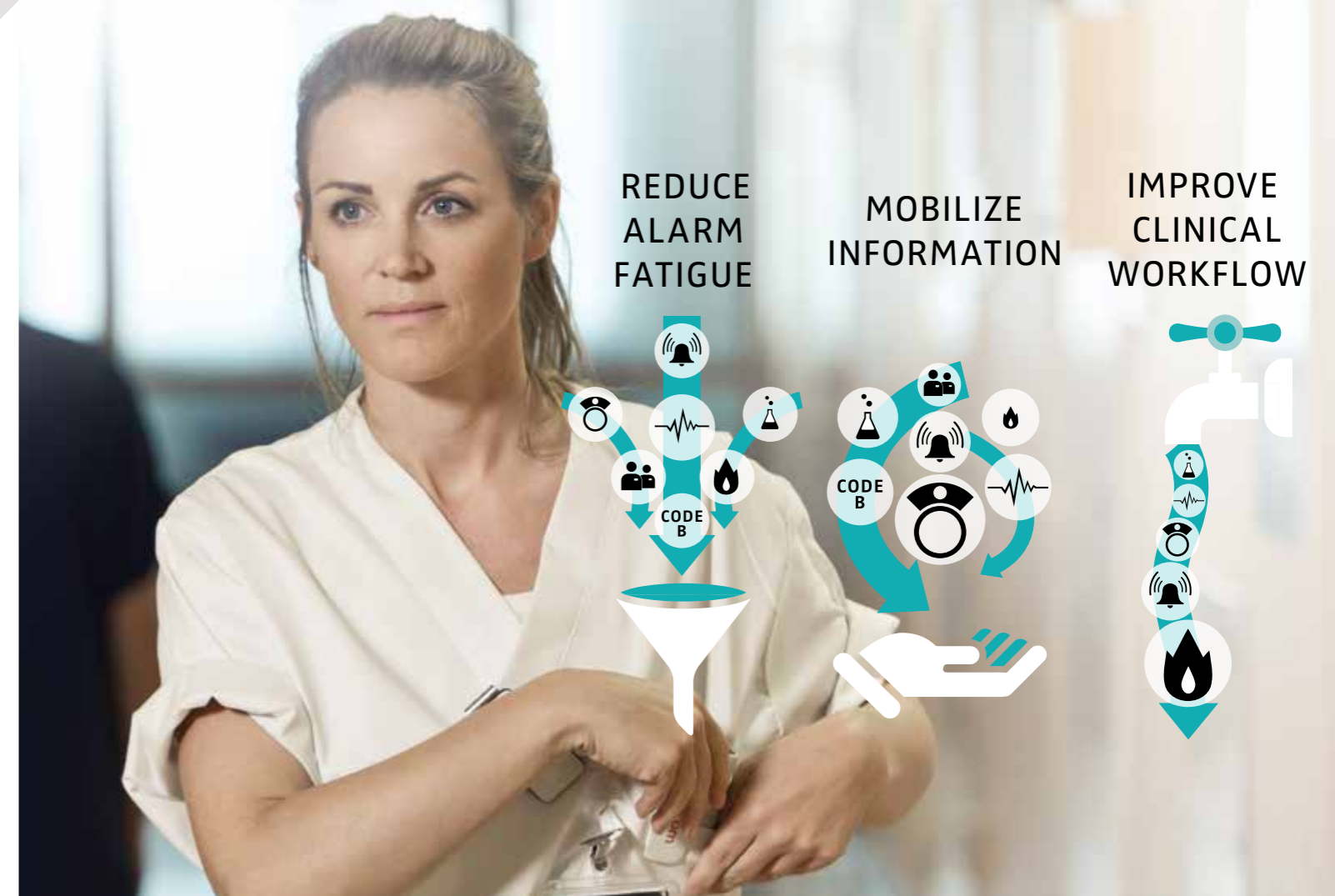


myco 
At the heart of care

www.ascommyo.com

ABOUT ASCOM WIRELESS SOLUTIONS

Ascom Wireless Solutions (www.ascom.com/ws) is a leading provider of on-site wireless communications for key segments such as hospitals, elderly care, independent living, manufacturing industries, secure establishments, retail and hotels. More than 75,000 systems are installed at major companies all over the world. The company offers a broad range of voice and professional messaging solutions, creating value for customers by supporting and optimizing their Mission-Critical processes. The solutions are based on VoWiFi, IP-DECT, nurse call and paging technologies, smartly integrated into existing enterprise systems. The company has subsidiaries in 13 countries and 1,200 employees worldwide. Founded in 1955 and based in Göteborg, Sweden, Ascom Wireless Solutions is part of the Ascom Group, listed on the Swiss Stock Exchange.



Struggling with the equation of limited resources and high demands on the quality of care?

Increasing aging population – a global challenge for healthcare

The increasing aging population will put higher and higher demands on the healthcare systems and there will be fewer and fewer caregivers available per patient. The only way to deal with this inevitable scenario is to utilize available resources in the most efficient way. To achieve this, workflows must become more integrated and more intelligent. Ascom Myco combined with Ascom Unite middleware and third party apps is an effective way to do this.

Inspired by nurses

Nurses are the everyday heroes in healthcare and deserve their very own companion to assist them in their jobs – that is why we developed Ascom Myco™ (My companion). It is a truly purpose-built smartphone for healthcare, providing caregivers and clinicians with the information they need where it matters the most – at the heart of care.

But Ascom Myco is much more than a purpose-built smartphone, it is an important factor when solving the equation of limited resources and high demands on the quality of care.

Different roles and different challenges

Ascom Myco is developed for nurses, caregivers and clinicians, but it affects and involves other functions in healthcare as well, such as hospital management, IT and consultants. By collaborating with healthcare facilities and applying user-centric design methods, we have developed Ascom Myco with the whole healthcare team in mind.

When developing Ascom Myco, our vision was to contribute to giving nurses a chance to spend more time with their patients and thereby increasing patient safety and satisfaction. To reach our vision we focused on three important areas:

- Reduce alarm fatigue
- Mobilize information
- Improve clinical workflows

Did we succeed?

Get a first glance of what Ascom Myco can do for you by looking through this overview and find out more details at www.ascommyco.com

Designed for you in every detail – purpose-built for healthcare

UNIQUE TOP DISPLAY

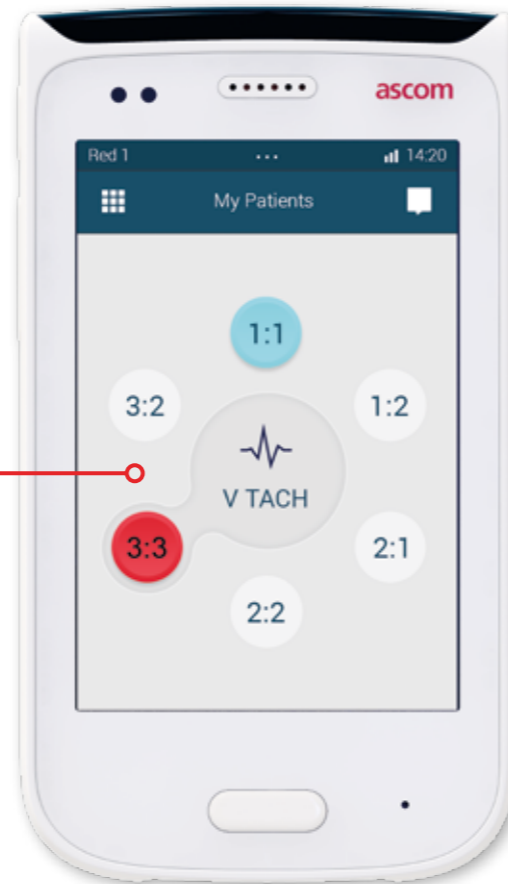
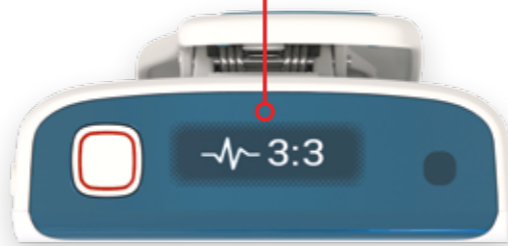
- Optimizes the handset for hands-free operation, i.e., you know how to respond without having to interact with the handset.
- “At a glance” notification of highest priority alert with sufficient context to immediately understand the situation.
- Color coded LED “priority” beacon (complying with medical alarm standards) for easy recognition and fast reaction.

MY PATIENTS – PATIENT CENTRIC USER INTERFACE

- Visibility of multiple alert status helps to prioritize tasks and to know when assistance is needed.
- Immediate visibility of assigned patients overview after logging into the handset.
- Patient-centric home screen provides vital “situation overview” of all assigned patients.
- Easy to accept/reject/forward alerts – supported by preconfigured auto-escalation chain.

APPLICATION HANDLING

- Segregation of essential apps from non-essential apps, so that core apps are given higher priority to system resources.
- App supervision module suppresses non-essential apps to optimize performance of core apps.
- “Sandboxing” functionality safeguards patient data within the apps and prevents unauthorized access.
- Supports 3rd party apps, i.e., compatible with thousands of Android apps, however, mission-critical communication always overrules all other applications.



PROFESSIONAL BARCODE SCANNER

- Rear-facing barcode scanner optimized to increase comfort and ease of use.
- Support for 1D and 2D barcode scanning.

CARRYING CLIP

- Specially designed carrying clip evenly distributes weight and provides a firm grip on a single layer of fabric to prevent drops.
- Replaceable color coded ID tag for easy identification.

MADE TO LAST

- High battery capacity, designed for long shifts. The battery is easy to replace and has a lockable switch securing the battery compartment.
- Durable and robust: built from materials specifically designed to withstand excessive drops and corrosion from disinfecting agents (IP54 certified).



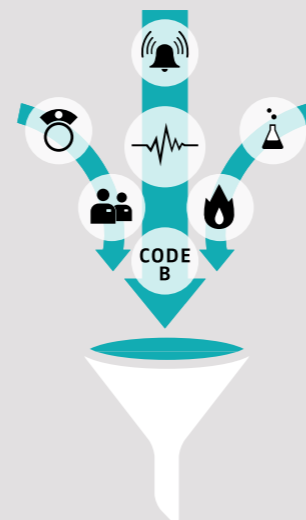
SMART CHARGING SOLUTIONS

- Multi-slot charging racks for up to 6 handsets or 6 batteries.
- Configurable in charger behaviour e.g. mute and auto escalate alerts.
- Dual port, supports Ascom Myco charging rack, includes integrated micro USB connector.

Reduce alarm fatigue

Did you know that alarm fatigue is becoming a patient security risk in healthcare? This is how Ascom Myco can help reduce alarm fatigue by intelligent alarm handling:

- The patient-centric overview allows the nurse to focus on her assigned patients. Alerts from the assigned patients go directly to the nurse’s handset instead of being broadcast to everybody in the ward.
- Simplified context-rich alert notification ensures an immediate understanding of what has happened, where and the priority level.
- Multi-modal indicators, including sound, vibration, color and text, engage more senses and enrich the context making each alert easier to understand.
- Visualization of multiple alerts status and the ability to quickly and easily accept, reject or forward alerts, backed by auto escalation.



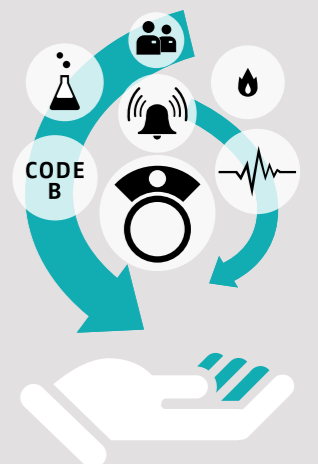
Mobilize information

Did you know that that nurses only spend 23%* of their time on a shift interacting with patients and that almost 50%* of the time is spent on administrative work, finding and exchanging information?

This is how Ascom Myco can help caregivers to spend more time with the patients:

- Mission-critical information and communication are literally available at their fingertips, only a click away, whenever it is needed, where it is needed.
- Alerts and alarms from different monitors and equipment connected to the assigned patients are directly pushed to the handset.
- A wide range of 3rd party apps is available for additional information and integration with medical health records, lab results etc, but for patient safety reasons, mission-critical communication will always overrule all other applications.

*Case study: observational user research during development of Ascom Myco



Ascom Myco & Ascom Unite – a part of the healthcare ecosystem

Ascom Myco is an essential part of a growing ecosystem made up of numerous subsystems within the hospital environment. When combined with Ascom Unite middleware, it extends the reach of existing clinical systems by delivering time-sensitive information directly to mobile caregivers.

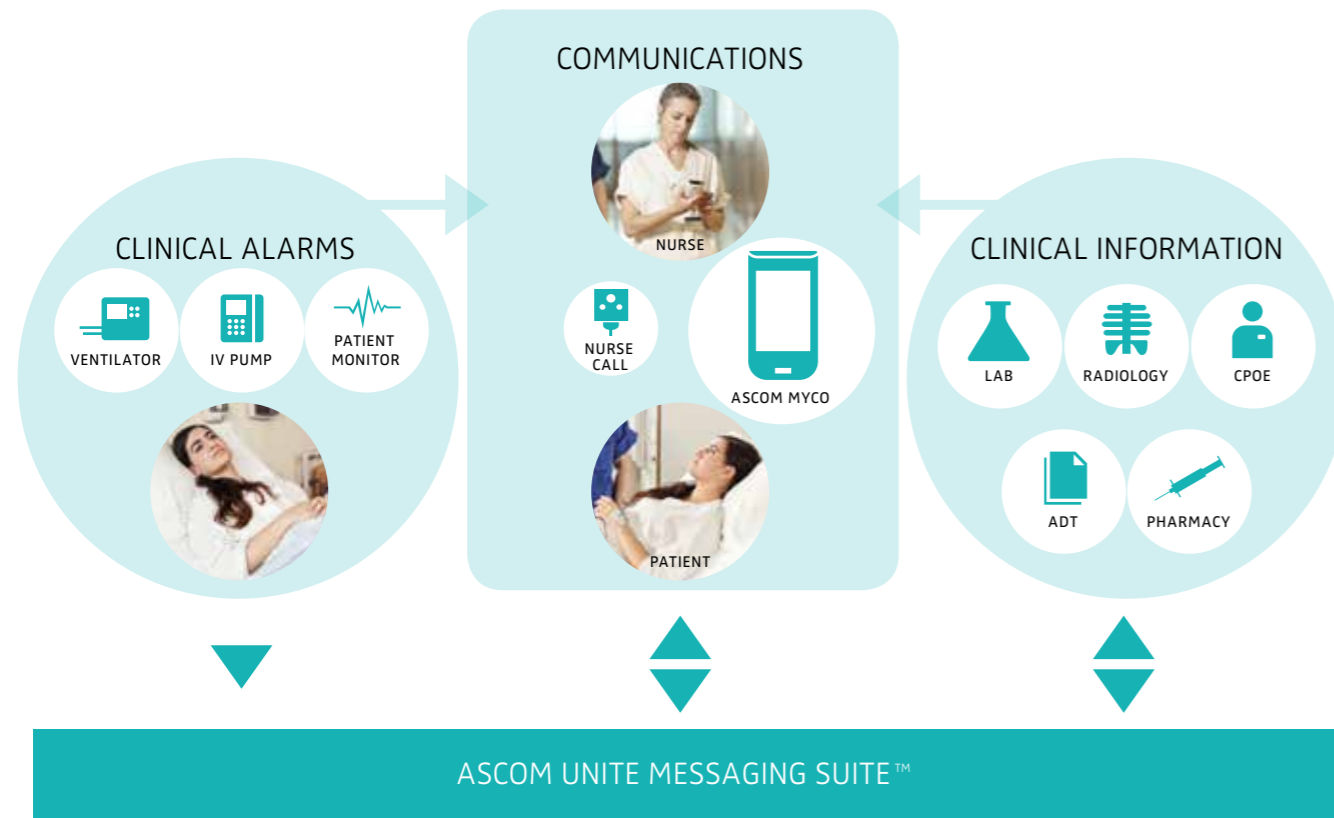
Integrated workflow intelligence

Ascom Unite combines intelligent integration, advanced alert messaging and system administration in one unique, powerful package. Together Ascom Myco and Ascom Unite create a “connected” environment where caregivers can remain mobile while accessing crucial patient information required for on-the-spot decision-making.

Evolving over time

Interoperability with various clinical systems like nurse call, patient monitoring and EMRs is crucial to promoting a “connected” environment and delivering an intelligent solution. Together with strategic partners, Ascom ensures harmonious interoperability for your end-to-end, mission-critical communication.

Our ultimate goal is to decrease the complexity of integrating solutions and to empower our customers to build innovative communication solutions that combine the best offerings from multiple vendors. Such hybrid solutions yield higher customer value greater than the sum of its individual parts. Customers are also able to evolve their systems over time as needed and realize a greater return on their systems investment.



Improve clinical workflow

Trying to find ways to optimize clinical workflows for increased efficiency? This is how the combination of Ascom Unite middleware, Ascom Myco and 3rd party apps can provide you with integrated workflow intelligence:

- Integrates with healthcare information systems and medical equipment.
- Filters and pushes mission-critical information to a specific caregiver for faster and more accurate decisions and response at the point of care.
- Logging events, it provides the necessary data to identify where efficiency improvements can be made to optimize workflows.
- Provides a unique overview of nurses and patients, streamlining the assignment process, and helping to ensure that the right caregiver is assigned to the right patient.



ASCOM PPS – PRODUCT PROTECTION SERVICES

Want to be sure that your investment delivers its optimal potential?

Ascom Myco is durable and will certainly outlive consumer grade devices. In addition, Ascom offers comprehensive product protection plans, professional repair, and backward compatibility with older models. Spares and accessories are kept available for a long time after the models are discontinued. We also offer complimentary swap stock services to minimize downtime for our customers. Simply put, Ascom Myco is guaranteed to deliver a greater return on your investment and peace of mind.

Ascom Product Protection Services is protecting your investment. It includes knowledge-based support and qualified expertise, maintenance and repair or replacement of all equipment that is included in the supported solution.

You also get access to all software updates for software products purchased including new features to optimize operational workflow.

With the Ascom PPS you can rest assured that the experts will help troubleshoot issues with your solution and you will keep your technology current and up-to-date.

How important is it to you that your system is fully operational at all times? To us, it is everything!



ASCOM INTEROPERABILITY PROGRAM

Tired of systems that lock you in and limit your options?

The Ascom Interoperability Program provides maximum freedom and flexibility. Our Interoperability Program is based on decades of expertise and experience, built on numerous installed systems in cooperation with our partners: all with one common goal – to decrease the complexity of managing integrated multivendor solutions.

Freedom and flexibility

We can empower our customers with the freedom to build innovative solutions by combining the best offerings from multiple vendors. It goes without saying that we also enable our customers to evolve their systems over time, resulting in a greater return on investments.

Seamless system integration

We work actively along with partners, leading application developers, mobile network operators, WLAN infrastructure suppliers, and PBX vendors, to mention a few. Together, we perform verification testing and certify that our products and solutions interoperate harmoniously, as one seamless system. The purpose of the Ascom Interoperability Program is to proactively develop and certify interoperability between Ascom applications and other companies' products.

'Certified Interoperability' delivers full feature visibility and trouble-free deployment for Ascom solutions when implemented together with systems from other vendors.

- Visibility – Documented functionality and performance for a multi-vendor solution creates transparency, insurance of value and confidence.
- Cost-effectiveness – No need to initiate functional testing at the partner and/or in the customers' environment at deployment.
- Assurance – Our certified partnerships ensure full multi-vendor cooperation to resolve issues that may arise.
- Future Proof – Ascom solutions grow with our customer's needs and can support most enterprise communications platforms.

The program gives a reliable and trusted verification of the interoperability of the joint solution, which makes a good base for a successful customer deployment.

ASCOM MYCO

FEATURES

- Professional Smartphone designed for mission critical communication
- Available in two versions Wi-Fi and Cellular+Wi-Fi
- 3G Cellular with HSPA data support
- Supports Wi-Fi 802.11a/b/g/n
- Seamless Wi-Fi roaming i.e. on-call handover between access points
- Centralized management via Ascom Unite or 3rd party MDM tools
- Supports Over-the-Air administration
- Android OS 4.4 KitKat – with “Ascom Mission Critical Extensions”
- Supports integration to other systems via Ascom Unite middleware
- Smart alert handling with “Situation Overview” for decision support
- Supports 3rd party Apps
- Unique top display with color-coded LED priority beacon
- Professional 1D/2D barcode scanner (optional)
- High capacity battery to support long shifts
- Optimized for single hand use, and regular disinfection
- Multifunction/Alarm button (optional)
- Hearing aid compatible (HAC)
- Durable, robust, and easy to carry
- IP54 Certified

OVERVIEW

Operating System: Android™ 4.4 KitKat®

CPU: ARM Cortex A9 1 GHz Dual Core

GPU: 3D Hardware accelerated graphics

Built-in Memory: 4 GB Flash, 1 GB RAM

Sensors: Three-axis accelerometer, proximity, and light sensor

Messaging: Text messaging, MMS, email, Ascom interactive messaging

Browser: HTML5

GPS: GPS with A-GPS support

Buttons: Home button, Power button, Volume button (up/down), Multifunction/Alarm button

Languages in the handset: 13 (Danish, Dutch, English, Finnish, French, German, Italian, Norwegian, Portuguese, Portuguese (Br), Russian, Spanish, Swedish)

Dimension: 113 × 65 × 16 mm (excl. clip)
(4.45 × 2.56 × 0.63 inches)

Weight: 180 g (6.3 ounces)

Color: White

Clip: Hinge-type (optimized for single-layer of fabric), with exchangeable color coded ID tag

DISPLAYS

Front display: TFT, dual capacitive touchscreen, 262K colors with LED backlight

Front display

size & resolution: 3.5” 320x480 display (166 ppi)

Protection: Shatter and scratch-resistant 1 Corning® Gorilla® Glass 3

Top display: Monochrome OLED

Top display size: 0.91” 128x32 display

CAMERA

Rear Camera: 5 Megapixels with Auto Focus

Camera resolution: 1944 × 2592 pixels

BARCODE SCANNER¹

Scanning features: Professional grade

1D (Linear) & 2D (Matrix)

¹. This function requires a license.

INDICATIONS

Indication types

(notifications

/alerts):

Icons and text in top display, Color-coded LED alert beacon, Vibrator, Ringtones, Message beeps, Notification sounds

AUDIO

Loudspeaker: Duplex loudspeaking function

Maximum sound

pressure level: 88 dBA at 10 cm

BATTERY

Type: Removable Li-ion 1520 mAh battery

WIFI

Supported networks: Wi-Fi 802.11 a/b/g/n (MCS0-7, 20 MHz, 800nS GI)

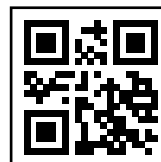
CELLULAR

Frequency bands

GSM: 850/900/1800/1900

3G (WCDMA): Bands: I,II,V,VIII (2100, 1900, 850, 900))

SIM card type: Micro-SIM



Ascom Wireless Solutions
Grimbodalen 2
402 76 Gothenburg, Sweden
T +46 31 55 93 00
F +46 31 55 20 31
myco@ascom.com
www.ascom.com